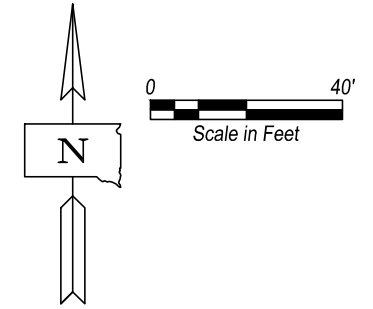


The elevations shown are based upon NAVD 88 Datum

Begin Project  
Sta. 2+25

Sta. 4+85 to 5+05  
Remove Existing ±20'  
Single Span Steel Girder Bridge  
(Incidental Work, Structure)

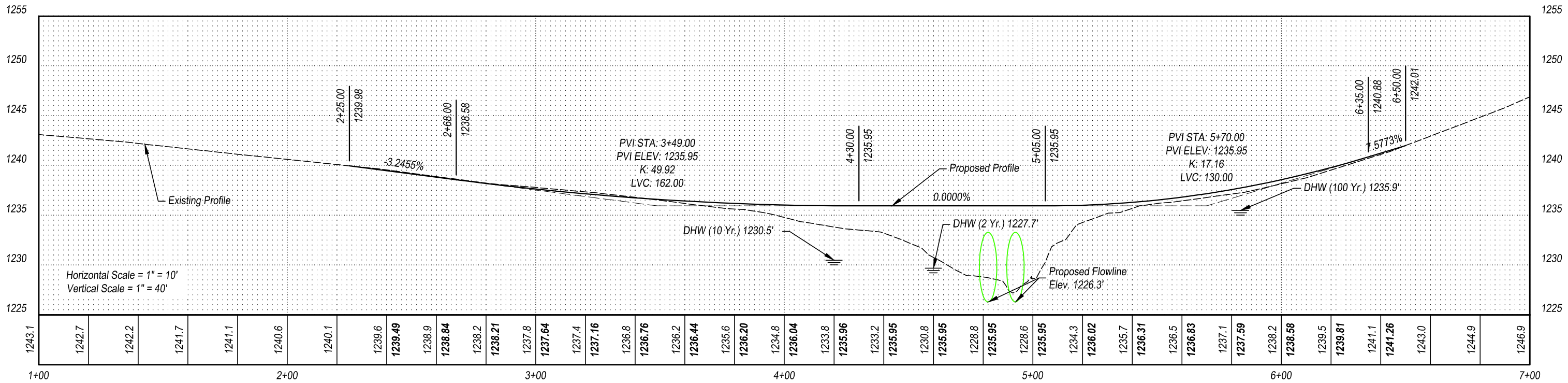
Sta. 4+93 ±  
Install 2 - 7x71'  
CMP Pipe Culverts



 Gravel Surfacing

End Project  
Sta. 6+50

Rolling Hills Road



**CLARK ENGINEERING**  
 Convention Center Plaza  
 1410 West Russell Street  
 Sioux Falls, SD 57104-1328  
 Phone: (605) 331-2505  
 Fax: (605) 331-2602  
 siouxfalls@clark-eng.com

#	REVISIONS	DATE	BY

Plan & Profile

Structure Replacement, Approach Grading, and Gravel Surfacing  
 68-041-211  
 Yankton County, South Dakota

PROJ. NO.	X17007
DRAWN BY:	TLB
CHECKED BY:	KLJ
DATE:	09/19/2017

SHEET  
**2**  
 OF 2